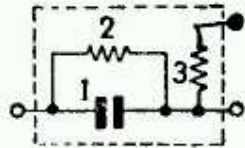


SCHEMI ELETTRICI

Gruppi **P.** (Resistori e condensatori)
usati negli apparecchi PHONOLA

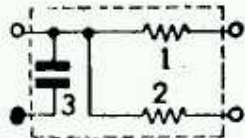
P 1.
R 5479



1 - 200 p. f.
2 - 0.2 M Ω 1/4 W
3 - 0.1 > > >

PH 5507 - PH 5519

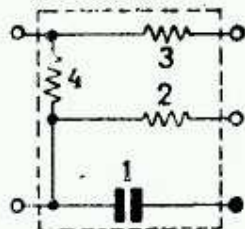
P 2.
R 5480



1 - 1 M Ω 1/4 W
2 - 2 > > >
3 - 25 p. f.

PH 5511 A - PH 5512 A

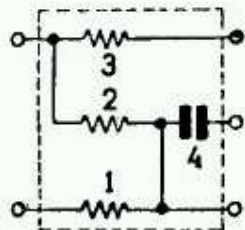
P 3.
R 5558



1 - 25 p. f.
2 - 2 M Ω 1/4 W
3 - 0.1 > > >
4 - 1 > > >

PH 5512 B - PH 5515
PH 5515 A - PH 5517 A
PH 5518

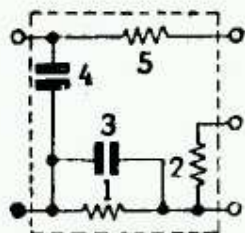
P 4.
R 5559



1 - 0.25 M Ω 1/4 W
2 - 0.1 > > >
3 - 10 K Ω > > >
4 - 200 p. f.

PH 5512 B - PH 5517 A
PH 5518

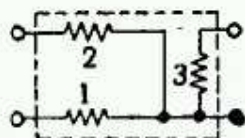
P 5.
R 5560



1 - 0.2 M Ω 1/4 W
2 - 0.1 > > >
3 - 200 p. f.
4 - 200 >
5 - 2 M Ω 1/4 W

PH 5507 - PH 5519

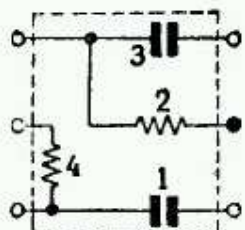
P 6.
R 5565



1 - 1 M Ω 1/4 W
2 - 0.2 > > >
3 - 15 K Ω 1/2 >

PH 5519 - PH 5525

P 7.
R 5566



1 - 50 p. f.
2 - 10 K Ω 1/2 W
3 - 150 p. f.
4 - 20 K Ω 1/4 W

PH 5519